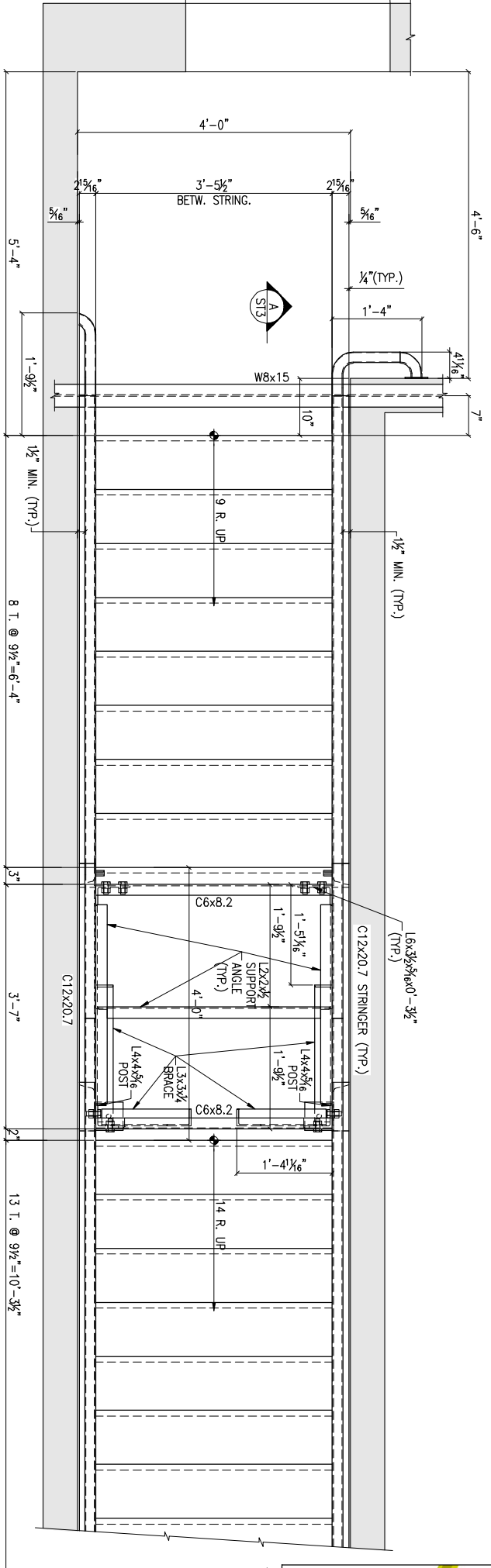
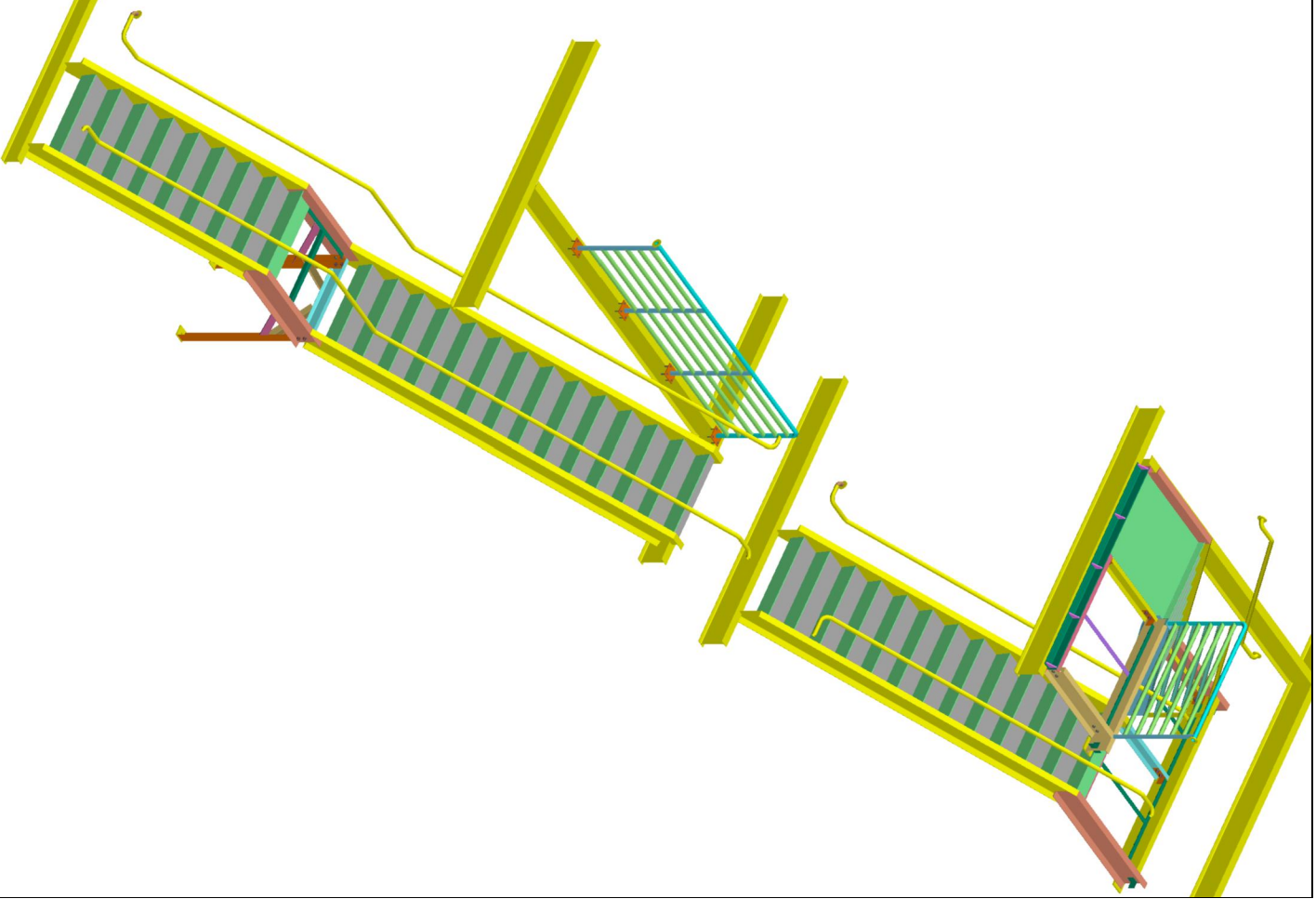


STAIR #2. PLAN AT 3RD FLOOR  
 ST1 SCALE: 1" = 1'-0"



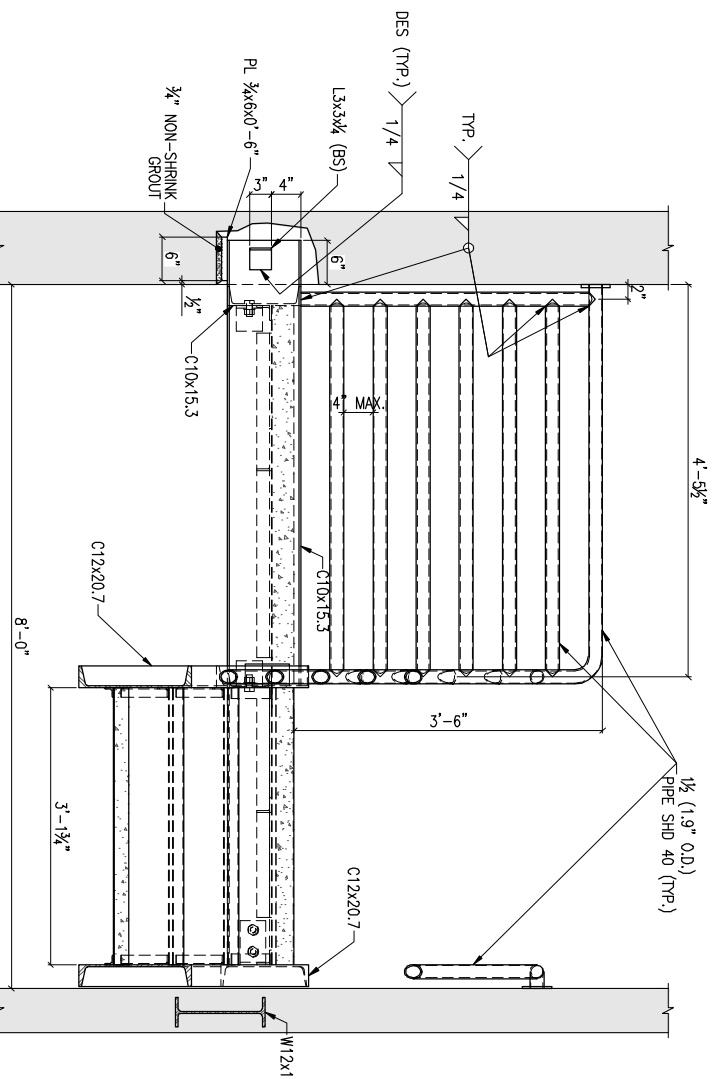
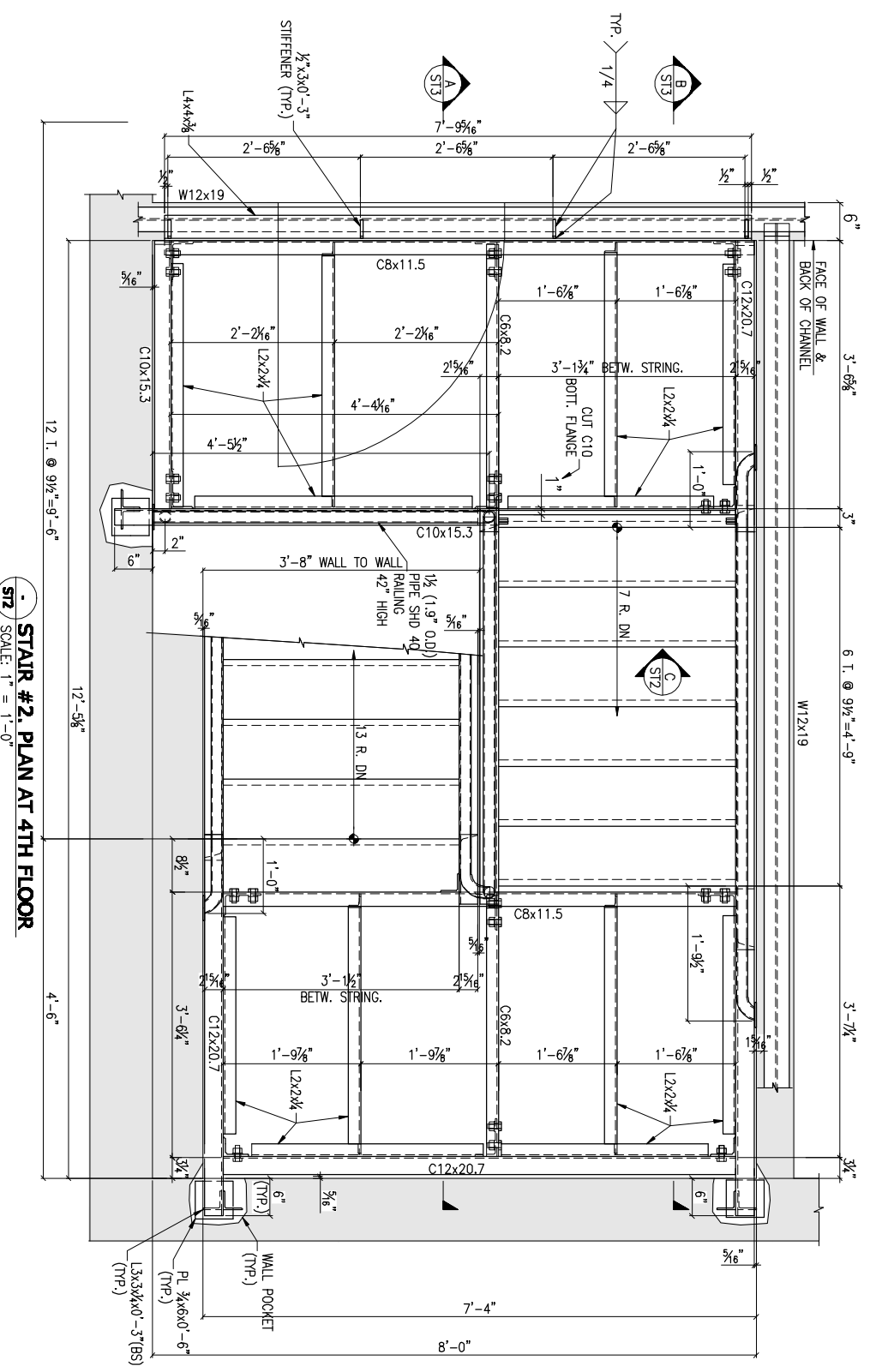
STAIR #2. PLAN AT 2ND FLOOR  
 ST1 SCALE: 1" = 1'-0"



MATERIAL: 8992-56; TUBES: A500 GRB  
 CHANNELS: A36; FITTINGS: A36  
 BOLTS: 3/4" A325SSC (UNO)  
 HOLES: 13/16" (UNO)  
 WELD: E70XX ELECTRODES LOW HYDROGEN  
 PAINT: AS PER SPECIFICATION

**TITLE: STAIR #2 PLANS**

No.	DATE	REVISIONS	REMARKS



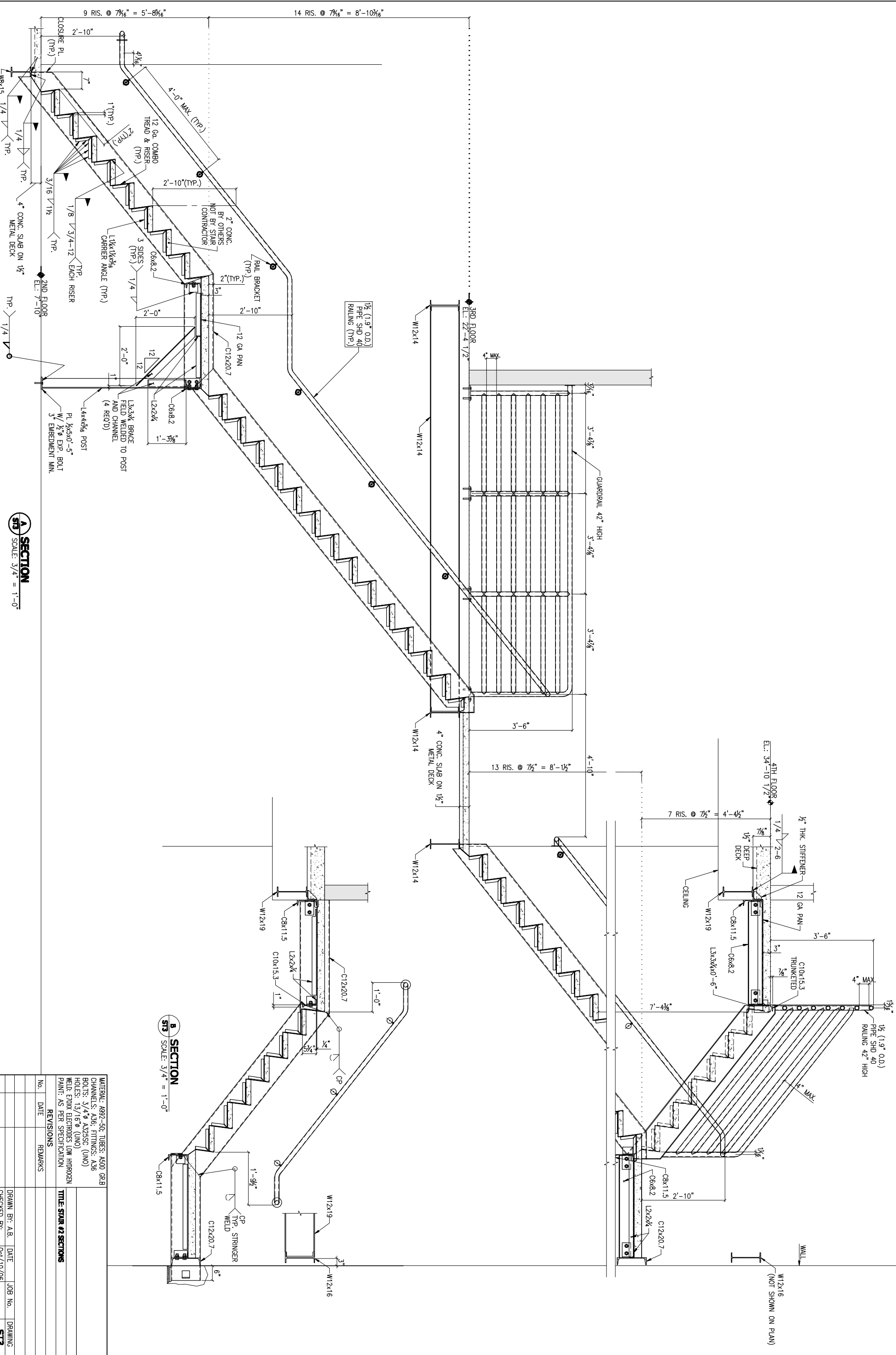
STAIR #2 PLAN AT 4TH FLOOR  
SCALE: 1" = 1'-0"

C SECTION  
SCALE: 1" = 1'-0"

MATERIAL		
9992-56	TUBES: A500 GRB	
	CHANNELS: A36; FITTINGS: A36	
	BOLTS: 3/4" A325SC (UNO)	
	HOLES: 13/16" (UNO)	
	WELD: E70XX ELECTRODES LOW HYDROGEN	
	PAINT: AS PER SPECIFICATION	
REVISIONS		
No.	DATE	REMARKS

TITLE: STAIR #2 PLAN AND SECTION

DRAWN BY: A.B.	DATE:	JOB No.	DRAWING
CHECKED BY: Oct/10/06			ST2



**A SECTION**  
 SCALE: 3/4" = 1'-0"

**B SECTION**  
 SCALE: 3/4" = 1'-0"

**C SECTION**  
 SCALE: 3/4" = 1'-0"

MATERIAL: 8992-56; TUBES: A500 GR.B  
 CHANNELS: A36; FITTINGS: A36  
 BOLTS: 3/4" A325SSC (UNO)  
 HOLES: 13/16" (UNO)  
 WELD: E70XX ELECTRODES LOW HYDROGEN  
 PAINT: AS PER SPECIFICATION

**TITLE STAIR #2 SECTIONS**

No.	DATE	REVISIONS	REMARKS

DRAWN BY: A.B.	DATE:	JOB No.:	DRAWING:
CHECKED BY:	0ct/10/06		ST3